

INSTRUCTIONS

The Home Radon Testing Device is harmless and easy to use. If you follow the instructions, this test will tell you whether or not you have a Radon Gas problem in your home at the time the test is run.

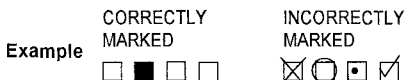
TO BEGIN TEST:

1. Please print your name, address, telephone #, and test location on test information card.
2. Using a #2 pencil, fill in the following information on test information card: date, start time (check AM or PM), time zone, average temperature and floor level on which detector is being placed. See Fig 1.
3. Remove the sealing cap from the detector and immediately replace it with the exposure cap (the cap with the 1/4" filtered hole in the center.) **HOLD THE DETECTOR UPRIGHT WHILE REPLACING THE CAP. SAVE THE SEALING CAP. PLACE THEM IN THE BROWN MAILING BAG. SAVE THE MAILING BAG.**
4. Expose opened detector in your home for 2 to 7 days. ANY exposure within this period will give you an accurate Radon level.

TO END TEST:

1. After 2 to 7 days, reseal the detector by removing the exposure cap (the cap with the 1/4" filtered hole in the top) and **IMMEDIATELY** replacing it with the sealing cap. **HOLD THE DETECTOR UPRIGHT WHILE REPLACING THE CAP TO AVOID SPILLING.**
2. Fill in date and time test was stopped on the Test information card (check AM or PM)
3. Put sealed detector, test information card, and exposure cap into mailing bag. Seal bag.
4. For the most accurate results, mail the Detector to: RTCA, AS SOON AS POSSIBLE. The detector must be received by RTCA within 10 days of stopping the test.

Fig. 1



FOR BEST RESULTS FOLLOW THESE EPA PROTOCOLS:

- Place detectors 24" to 36" above the floor on an exposed surface: (i.e.-a Shelf or table.)
- Place one detector in the lowest livable level of home. Place the second detector on the next higher level in a living area. If additional detectors have been purchased, they should be placed on the next higher floor(s) in a living area.
- Exterior windows and doors should be kept closed 12 hours before starting test and throughout the entire test period. Do not operate high volume attic and window fans during the test.
- Do not place detectors in drafts from ventilators, doors, windows, fireplaces, heating or air conditioner vents. Do not place detectors directly next to exterior house walls.
- Do not place detectors near sources of high heat: (i.e. -furnaces, TV, etc.).
- Do not place detectors in a "still air" section of the room (such as inside drawers or cabinets). This will block the detectors from the normal air supply in the room.

CONDITIONS GOVERNING CONTRACT PERFORMANCE AND LIMITATION OF LIABILITY

CONTRACT PERFORMANCE: Seller shall not be responsible for nonperformance or delays in performance occasioned by any causes beyond Seller's reasonable control, including, but not limited to, labor difficulties, delays of vendors or carriers, fires, governmental actions and material shortages. Any delays occasioned shall effect a corresponding extension of Seller's performance dates which are, in any event, understood to be approximate. In no event shall Buyer be entitled to incidental or consequential damage for late performance or a failure to perform.

WARRANTY AND LIMITATION OF LIABILITY: Enviro Technology Corporation and RTCA does not accept any responsibility for financial or health consequences of subsequent actions taken by the client or its consultants as a result of any Radon Gas and/or associated progeny concentration measurement program conducted by Enviro Technology Corporation and RTCA.

Seller warrants that any packaging or other services supplied by Seller and specifically purchased by Buyer shall be of a good quality and will be free from defects in material and workmanship. All claims for defective or non-conforming (both hereafter called defective) workmanship or materials under this warranty must be made in writing immediately upon discovery and, in any event within one (1) year after shipment. Defective items must be held for Seller's inspection and returned to the original F.O.B. point upon request. The foregoing is expressly in lieu of all other warranties whatsoever, express, implied and statutory including, without limitation, the implied warranties of merchantability and fitness.