

INSTRUCTIONS

The Home Radon Tester is harmless and easy to use. If you follow the instructions, this test will tell you whether or not you have a Radon Gas problem in your home at the time the test is run.

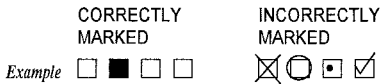
TO BEGIN TEST

1. Please print your name, address, telephone no., and test location on back of test information card.
2. Using a pencil, fill in the information on card: date, start time (check AM or PM), time zone, average indoor temperature, and floor level in which canister is being placed. See Figure 1
3. Remove R.T.C.A. Canister label. Place canister in selected location.
4. Do not remove tape that holds the top and bottom of can.
5. Do not take can apart.
6. Expose the canister in your home for 2 to 7 days. ANY exposure within this period will give you an accurate radon level.

TO END TEST:

1. After 2 to 7 days, seal canister top with label which reads "Use This Label To Seal Perforated Side Of Canister". Remove paper backing before applying label to canister top.
2. Fill in date and time test was stopped on the test card (check AM or PM).
3. Remove the lowest portion of the bar code label from the bottom of the canister and keep for your records. Then take the second bar code label and remove the paper backing from this bar code label and affix to the information card in the space provided.
4. Put the canister and test information card back into box and mail to R.T.C.A.
5. For the most accurate results, mail the canister to: RTCA, AS SOON AS POSSIBLE. The canister must be received by RTCA within 10 days of stopping the test.

Figure 1



For Best Results Follow These EPA Protocols:

If you are conducting a radon test for a real estate transaction, the EPA recommends these short-term options.

Take **two** short-term tests at the **same time** in the **same location** for at least 48 Hours.

OR

Take an initial short-term test for at least 48 hours. After the first test has been completed, take a follow-up short term test for at least 48 hours.

- If you are conducting a radon test that is **not** for a real estate transaction, Place canisters at least 20 inches above the floor on an exposed surface: i.e. a table, box, or the RTCA PROFESSIONAL TEST STAND.
- Place one canister in the lowest level of the home (i.e. basement). Place the second canister on the next higher level in a living area. Additional canisters should be placed in accordance with your individual testing strategy.
- Windows and doors should be kept closed as much as possible 12 hours before starting test and throughout the test period. Do not operate high volume attic and window fans during the test.
- Do not place canisters in drafts from ventilators, doors, windows, fireplaces, heating or air conditioner vents. Do not place canisters directly next to exterior house walls. Do not place on heat producing objects such as furnaces or televisions.
- Do not place canisters in a "still air" section of the room (such as inside drawers or cabinets). This will block the canisters from the normal air supply in the room.

CONDITIONS GOVERNING CONTRACT PERFORMANCE AND LIMITATION OF LIABILITY

CONTRACT PERFORMANCE: Seller shall not be responsible for nonperformance or delays in performance occasioned by any causes beyond Seller's reasonable control, including, but not limited to, labor difficulties, delays of vendors or carriers, fires, governmental actions and material shortages. Any delays occasioned shall effect a corresponding extension of Seller's performance dates which are, in any event, understood to be approximate. In no event shall Buyer be entitled to incidental or consequential damage for late performance or a failure to perform.

WARRANTY AND LIMITATION OF LIABILITY: Enviro Technology Corporation and RTCA does not accept any responsibility for financial or health consequences of subsequent actions taken by the client or its consultants as a result of any Radon Gas and/or associated progeny concentration measurement progeny concentration measurement program conducted by Enviro Technology Corporation and RTCA.

Seller warrants that any packaging or other services supplied by Seller and specifically purchased by Buyer shall be of a good quality and will be free from defects in material and workmanship. All claims for defective or non-conforming (both hereafter called defective) workmanship or materials under this warranty must be made in writing immediately upon discovery and, in any event within one (1) year after shipment. Defective items must be held for Seller's inspection and returned to the original F.O.B. point upon request. The foregoing is expressly in lieu of all other warranties whatsoever, express, implied and statutory including, without limitation, the implied warranties of merchantability and fitness.